

PROFILCUT  premium

leitz

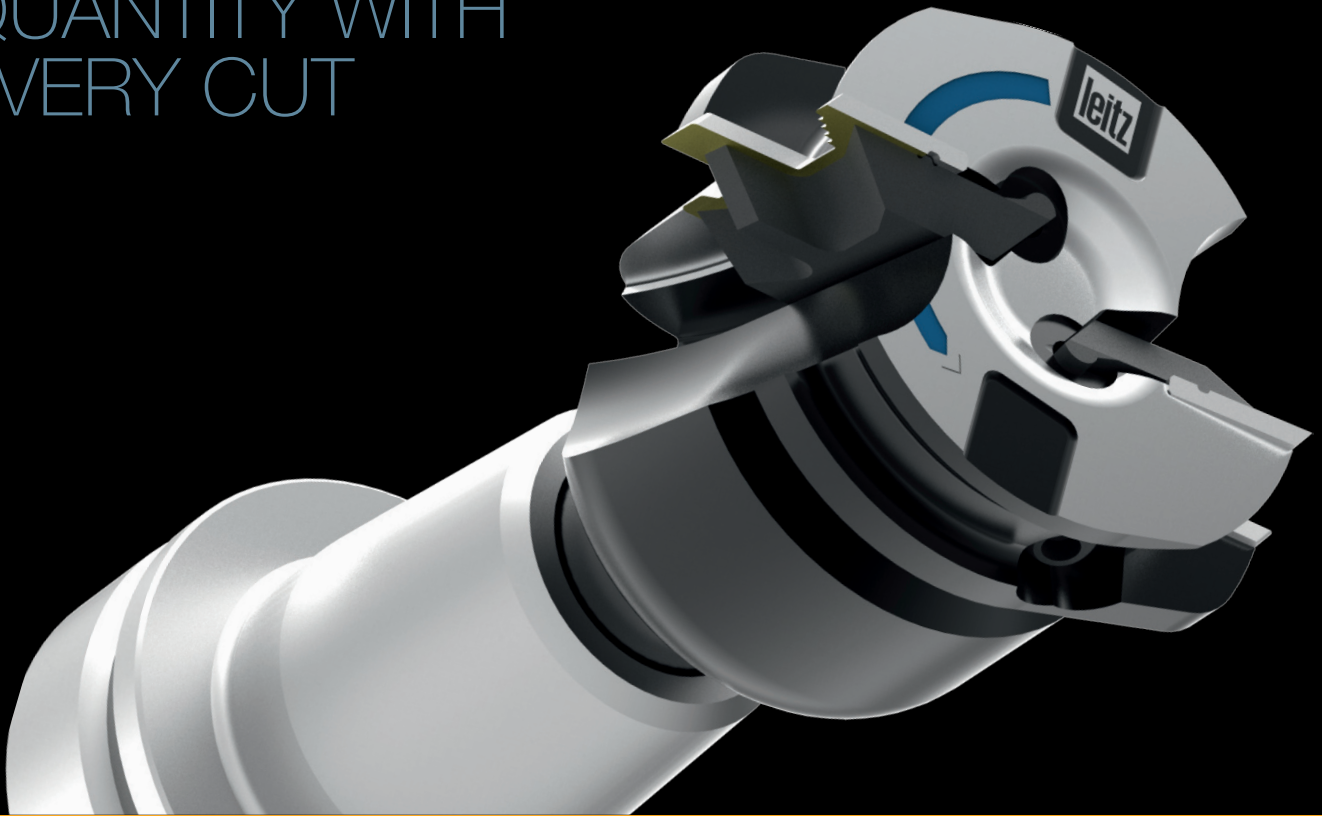


**NEW!**  
higher performance  
more profitability

## ProfilCut Q Premium

**Best performance and cutting quality  
in the production of windows, doors,  
furniture and flooring**

# MORE QUALITY AND QUANTITY WITH EVERY CUT



## Trimmed to the highest performance-power

**With ProfilCut Q Premium, manufacturing companies can rely on an extraordinarily strong top performer. The new cutter head system from Leitz is the ultimate solution for companies who want to make the most from their production.**

**This unique tool design wins in every single part. Thus, ProfilCut Q Premium is setting the benchmark for performance, flexibility, handling, weight and durability.**

With a cutting speed of 120 meters per second, the premium system is faster than any comparable tool, both in productivity and surface quality. Its accelerated process performance saves time and money.

The interaction and combination of technical innovation is basic to the new standard. The latest clamping system has been designed for the highest radial speed, the unique surface coating reduces abrasion, shock load and heat build-up even more effectively. The lightweight design of the tool body maintains a greater dynamic. Additionally, to change the knives is simple, fast and accurate.

A unified clamping system guarantees a safe, form-fitting clamping and therefore minimal set-up time. The special clamping wedges have the additional function as chip-guiding elements. This technical feature enables an undisturbed and dust-reduced chip generation and consequently helps lead to a perfect finish. With the ergonomically contouring of the tool body, noise pollution is effectively reduced.



# 120m/s

## MORE SPEED

**Maximise productivity by the reduction of processing time and a significantly better surface-quality due to**

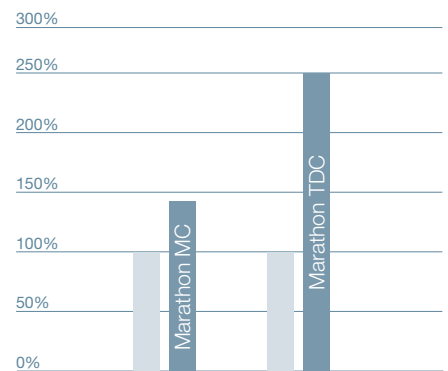
- innovative and secure clamping system,
- unique tool body coating reduces heat generation and friction,
- lightweight construction of the tool body.



## MORE USABILITY

**Short set-up times and best usability due to**

- automatic knife adjustment without setting gauges,
- changing the knives while the tools is in the machine possible,
- clamping screws are dust-protected,
- perfect repetition accuracy, after every knife change,
- noise reducing design.



## MORE ENDURANCE

**Longer finish cutting quality due to**

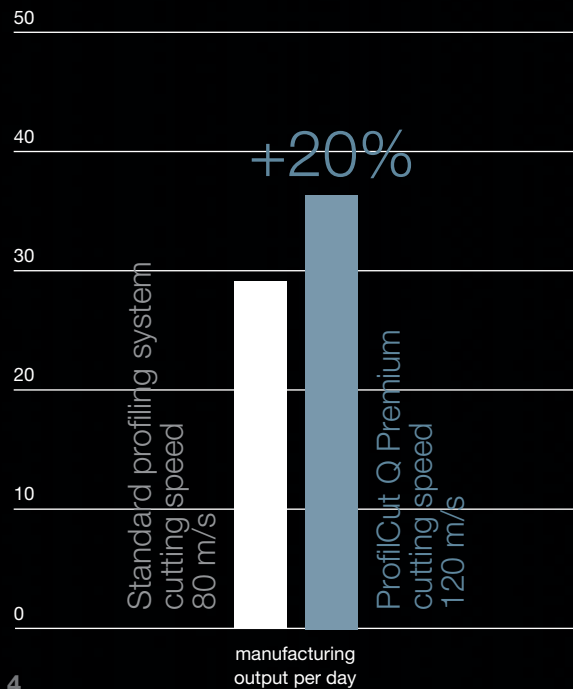
- knives with Marathon „high power“ coating,
- innovative coating-technology for longer performance and cut quality,
- balanced to prevent vibration, therefore an enhanced cut quality surface finish.

# MORE PROFIT ON EVERY LEVEL



## Typical production example:

- manufacturing output 30 windows per day
- average cutting time 42% per window
- comparison from an average profile tooling system with Leitz ProfilCut Q Premium





## Profile:

- Glue joint profiles
- Window profiles
- Panel raising profiles
- Slot and tenon profiles
- Interior and exterior profiles
- Post- and softforming profiles

## Work processing

For every profiling tasks in small, medium-sized and large-scale production with extremely high cutting speeds ( $v_c$ ) up to 120 m/s.

## Machine types

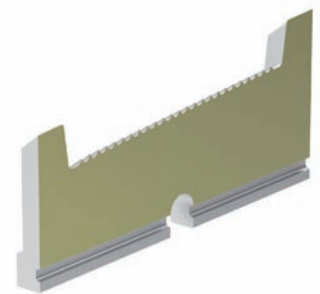
For all conventional cutting machines with manual feed (MAN) or mechanical feed (MEC). Especially designed for high power machines.

## Raw materials

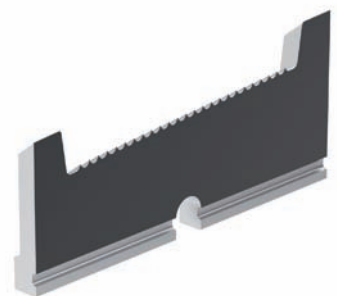
- Hard and softwoods
- Wood derived materials such as: plywood, fibreboard, block board and chipboard
- Polymers such as: Duro- and Thermoplastics, laminated wood based panels as well as composite materials

## Coating

Marathon MC (Multicoating) for demanding profiling tasks in small and medium sized companies. Marathon TDC (Tungsten Diamond Coating) for the processing of hardwoods, abrasive materials and for large scale production.

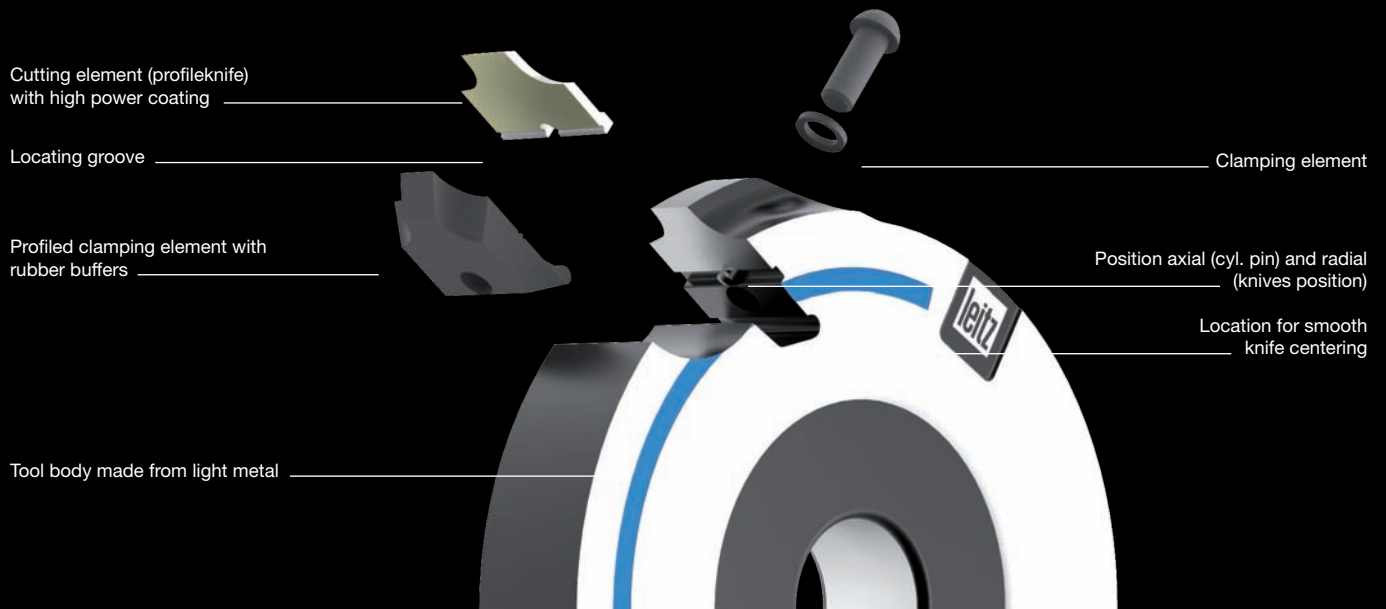


Marathon MC-coating – highest quality for soft woods



Marathon TDC-coating – specialist for hard woods and abrasive materials

# TECHNICAL SPECIFICATIONS



## RADIUS

- Shank tool 0 - 400 mm
- Tools with bore 70 - 650 mm

## CUTTING WIDTH

- 8 - 80 mm ProfilCut Q
- 8 - 120 mm Turnblade

## CLOSED PROFILES

- Z2 - from zero diameter 60 mm up
- **Max.** number of teeth depends on diameter

## TOOL BODY

- Aluminium

## NUMBER OF TEETH

- Single-sided profiles:
- Z1 - up to zero diameter to 40 mm
  - Z1/1 - from zero diameter to 40 mm
  - Z2 - from zero diameter to 50 mm

## PROFILE DEPTH

- PT max. 20 mm (straight tool body)
- PT > 20 mm (cranked tool body)

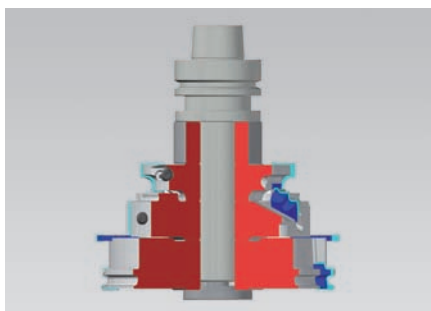
FOR SPECIAL SURFACE QUALITY DEMANDS, WE RECOMMEND SPLITTING THE CUTTING EDGE (2-PART DESIGN INSTEAD OF A 1-PART DESIGN – INDEPENDENT OF THE CUTTING WIDTH).

# THE LEITZ POWERPACK – TUNING FOR TOOLS AND MACHINES

## BETTER PRODUCTIVITY

**Leitz HSC technology  
(High-Speed-Cutting) for  
higher RPMs and feeding**

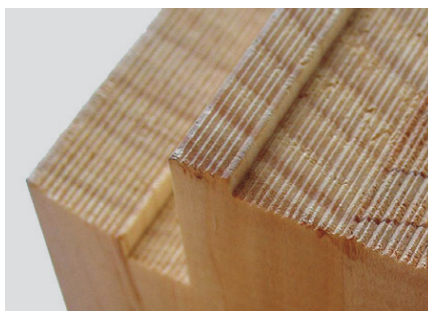
- shrink-fit chuck or shrink-fit arbor for zero tolerance clamping
- optimizing radial runout accuracy, balancing and dynamic stiffness



## PERFECT QUALITY

**Leitz RipTec-processing for  
significantly better product  
quality and longer tool life**

- ripple for planing and cutting cross grain
- Integral RipTec for pre- and finish-cutting using a single tool



## PROCESS INTELLIGENCE

**Leitz chip-technology for more  
process safety, security and  
shorter set-up times**

- smart tools with integrated memory chip
- geometry- and technical data for exact machine operations



## Leitz is your competent partner



Leitz offers partnership and market leading tool knowledge and technology offering 3 components for your success:

- Innovative tooling systems, resource saving plus enhanced quality for better production
- Bespoke, modular or comprehensive Tool Management for enhanced efficiency
- Excellent service, reliable, near to customers all around the world



Leitz GmbH & Co. KG  
Leitzstraße 2  
73447 Oberkochen, Germany  
Tel. +49 7364 950-0  
Fax +49 7364 950-662  
leitz@leitz.org  
www.leitz.org

Leitz GmbH & Co. KG  
Leitzstraße 80  
4752 Riedau, Austria  
Tel. +43 7764 8200-0  
Fax +43 7764 8200-111  
office.riedau@rie.leitz.org  
www.leitz.at



We shape the future